

Ensure data consistency within ENI versalis MES infrastructure



Luca Andrea Canossa, IT Project Manager, ENI

23rd May 2019



In cooperation with



© Copyright 2019 OSIsoft, LLC

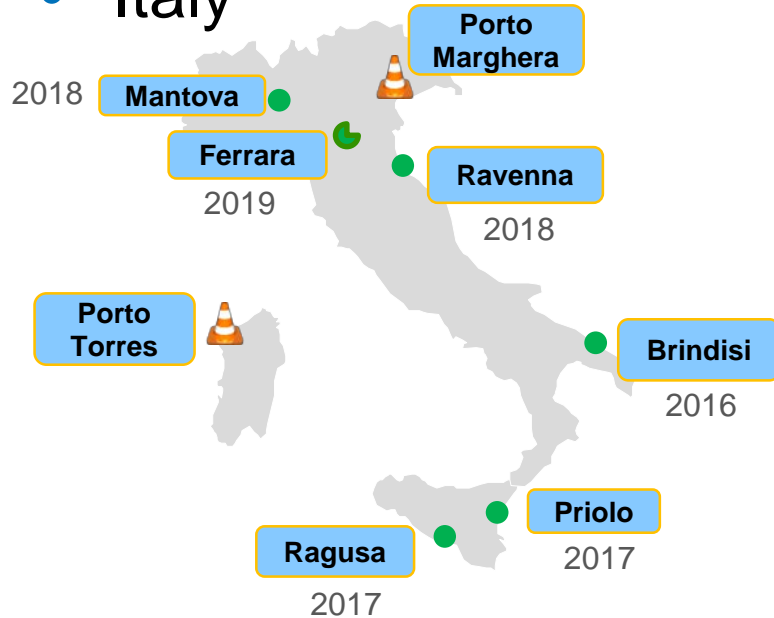
Eni Chemicals, Versalis



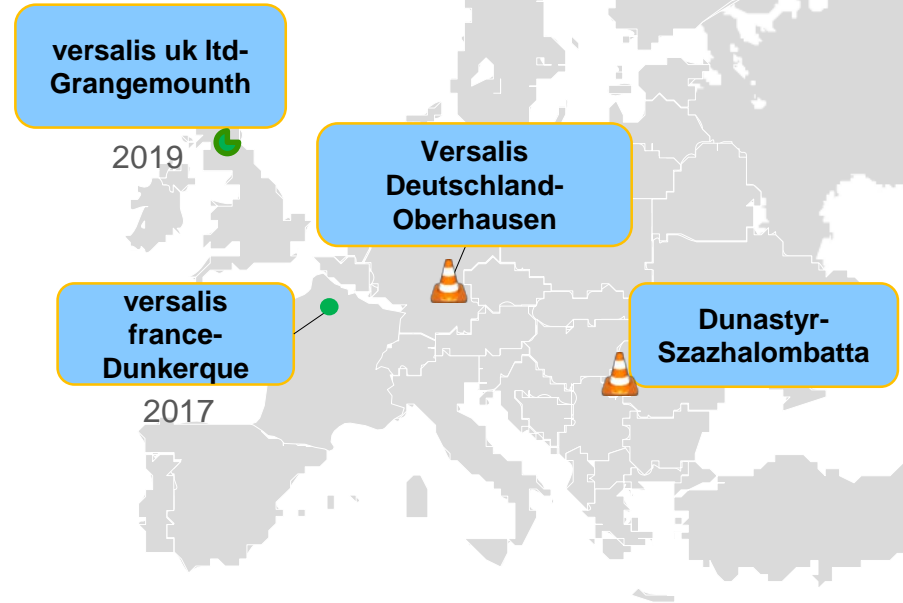
Versalis (Eni) is Italy's largest chemical company interfacing with markets on the international scene of the basic chemicals, plastics, rubber and, recently, bio-based industry, holding market stewardship in manufacturing intermediates, polyethylene, styrenics and elastomers

Manufacturing Execution System (MES): a digitalization initiative

Italy

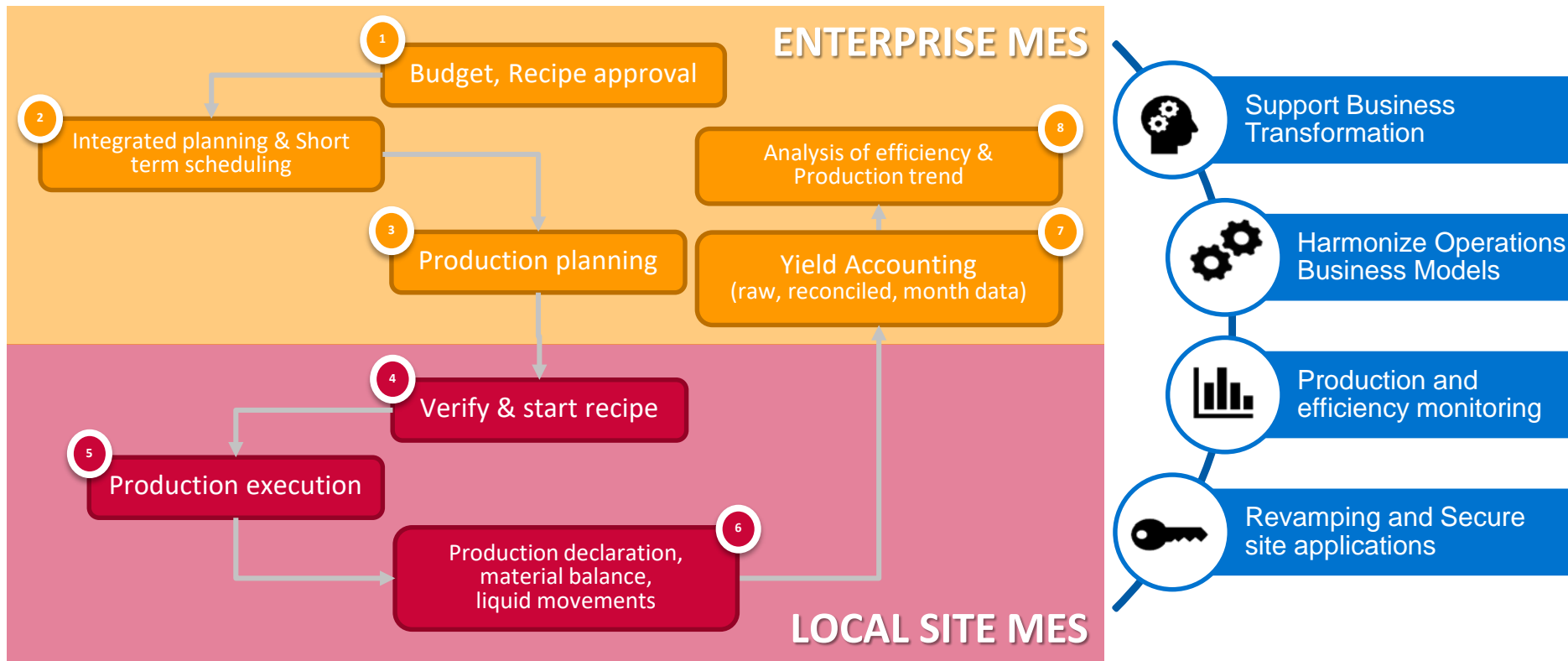


Europe



● Completed ● Close to Go-Live ● In progress

MES – Main initiative goals & benefits



The two data pillars of the MES infrastructure

PI System

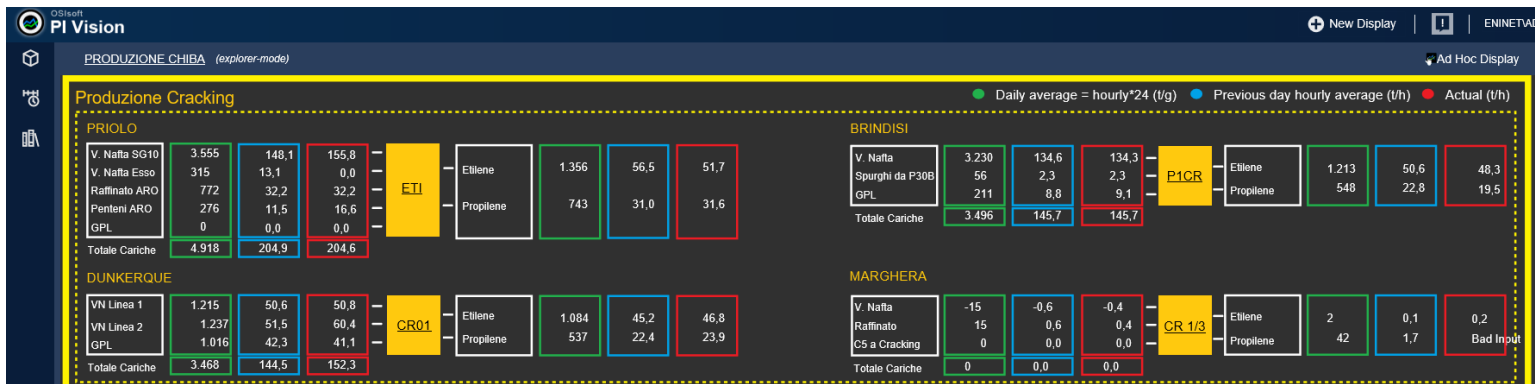
Sigmafine

- Both Distributed and Centralized data infrastructure
- Production accounting
- Daily reconciliation and monthly aggregation
- Inventory checks and bill of material validation
- Auditing data chain (raw value, user validation, reconciled figure)
- Automatic Email notification
- Advanced algorithms (e.g. quality tracking)

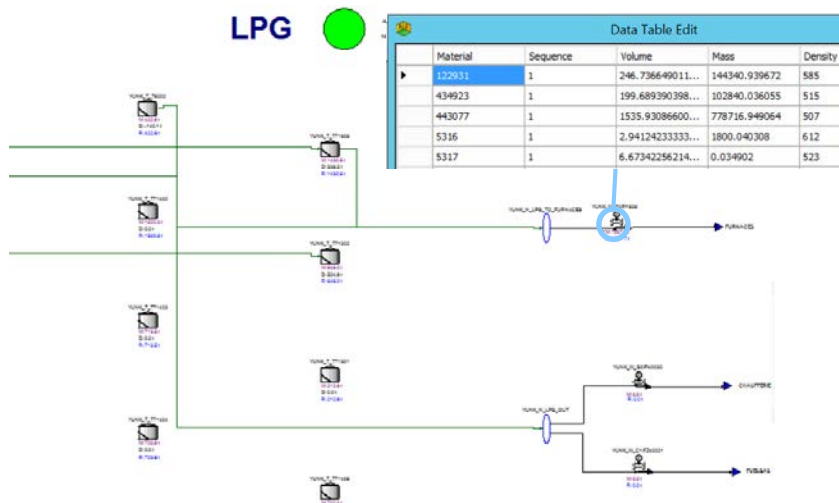
Use case: enterprise real-time monitoring of all sites

PI Vision dashboards allow aggregated view and comparison of plant **feeds** and **productions** for all the sites, based on:

- Real-time data
- Daily averages
- Daily averages of the previous day

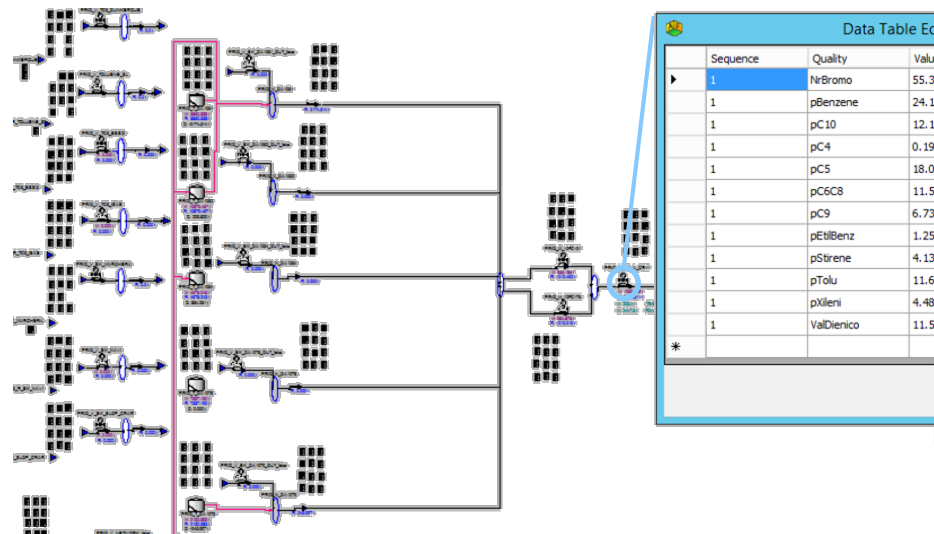


Sigmafine tracking at Dunquerke and Priolo



Composition Tracking applied at LPG network in Dunquerke

- Combine PI system data and material movements
- Infer material composition of the cracker liquid feed (% of propane and butane)
- Find optimal composition of cracker feed
- **Improved cracker yield**



Quality Tracking applied to aromatic plant in Priolo

- Combine PI system data and material movements
- Infer material properties in inventories and moreover at plant feed (%comp., bromine and diene numbers)
- Assessment of plant yield is now achieved in near real time
- **Improved decision making in logistics**

Ensure data consistency within ENI versalis MES infrastructure

COMPANY and GOAL

ENI versalis wants a unique infrastructure to manage all information both locally and at enterprise level



CHALLENGE

Many sites, each with specific rules and needs, several different systems

- It is hard for headquarter to have a summary of all the business
- Relevant data are often available too late, delaying business decisions (typically month end reports)

SOLUTION

A unique model for Operations applied to all sites, based on the PI System to collect the data and Sigmafine for the data validation and analysis

- Harmonized business processes among several production sites
- Able to manage different productions and logistics

RESULTS

Management has now control of the entire business.

Key production data are now available daily allowing a faster reaction to market changes

- Quality of the data has increased both due to better systems integration and data validation and reconciliation
- No more huge imbalances at month end

Contact Information



Name: Luca Andrea Canossa
Title: IT Project Manager
Company: ENI

Thank You